

STAN ONE[®]

2024

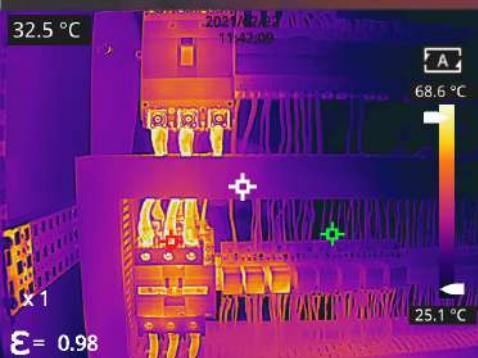


STAN ONE[®] Series

STX-480 | STX-640

Handheld Auto & Manual Focus Thermal Imaging Camera

**AI
Powered**



Handheld Auto & Manual Focus Thermal Imaging Camera



The STX 480 & STX 640 are power Inspection Thermal Imaging Cameras with "Interchangeable" lens options to allow configure as per application & distance requirement.

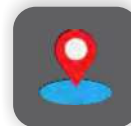
With Automatic focusing, Manual focusing & E Focusing options, the technician or operator will always capture high definition, high precision thermal & visual images meeting the need for intelligent inspection with database management & Image retrieval, comparison & analysis functions for defect diagnosis.

Key features include : 5" Touch screen display, 13MP digital camera with LEDs, 19 color palettes, 64GB memory, 3 hours battery back up,

STX Series Thermal Imaging Cameras are available in two variants:

STX 480 : thermal resolution 480 x 360

STX 640 : thermal resolution 640 x 512



Refer table

Interchangeable Lens Options

When selecting a thermal imaging camera lens, it is important to consider the application, the distance from the target & level of detail needed. The right lens can help you get the best images & improve accuracy in your inspection.

Lens options include Wide-angle to Long-focus

Lens	Standard Lens	Wide Angle Lens	Long Focus Lens	Ultra Long Focus Lens	Macro Lens	Super Macro Lens
FOV	25° X 20°	45° X 36°	14° X 11.2°	7° X 5.6°	0.2X	0.4X
Minimum Distance	0.4m	0.2m	3m	4m	39mm	19mm
Maximum Distance	Upto 15m	Upto 7.5m	Upto 40m	Upto 50m		

STAN ONE[®] STX 480 | STX 640



Handheld Auto & Manual Focus Thermal Imaging Camera



Laser Rangefinder

Distance measurement function till 50 meters. By combining the distance information with the thermal imaging data, a range finder can provide a more accurate temperature measurement of an object by compensating for any errors introduction by the distance between the camera and the object.

Gorilla Glass

Impact and explosion resistant.

Charing

Both Direct (plug in) and desktop charging. 1 main + Spare battery to allow continuous use.



Voice annotation and QR code naming functions free your hands

Handheld Auto & Manual Focus Thermal Imaging Camera



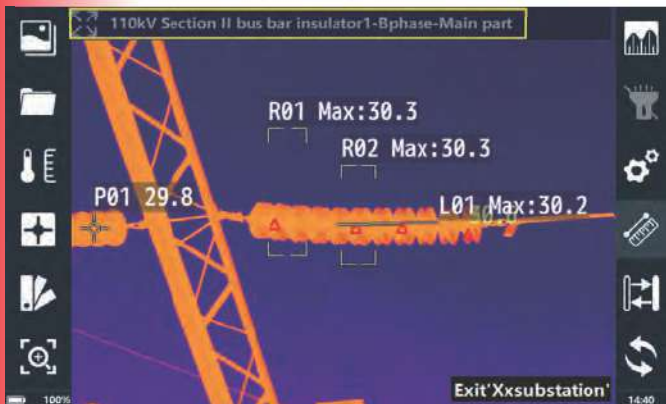
STX Series has flexible and diverse file and video transmission modes :



Multiple functions are available, such as GPS, Bluetooth, micro HDMI, laser range finding for distance measured, audible and visual alarm.



Professional & Diverse Software Functions



- Save the photos automatically according to the naming rules in the inspection task system
- Automatically calculate the temperature difference of similar analysis
- Support voice notes and be stored along with the image
- Built-in GPS and can automatically add location information to the image(optional)

Application Fields :

**Power grids/ OHE
Industry
Condition Assessment**



Product	STX480	STX640
Detector Type	Uncooled infrared detector, 12μm	
Detector Resolution	480 X 360	640 X 512
Super Resolution	960x 720	1280×1024
Thermal Sensitivity (NETD)	35mK	
IFOV	Standard: 0.92mrad; Wide-angle: 1.71mrad Long-Focus: 0.52mrad; Ultra-long-focus: 0.27mrad Macro 60μm: one pixel corresponds to 60μm; Super macro 30μm: one pixel corresponds to 30μm	Standard: 0.68mrad; Wide-angle: 1.26mrad; Long-focus: 0.38mrad; Ultra-long-focus: 0.2mrad macro 60μm: one pixel corresponds to 60μm; Super macro 30μm: one pixel corresponds to 30μm
Lens and FOV	Standard lens: 25°. Optional lens: Wide-angle lens 45°; long-focus lens 14°; Ultra-long lens 7°; Macro lens 60μm; Super macro lens 30μm manual+autofocus lens (AF/MF), for automatic recognition once mounted	
Frame Rate (Hz)	30Hz	
Wavelength Range	7.5~14μm	
Focusing Mode	Manual, One-button center focus, Automatic center focus, Touch screen focus, Laser-assisted focus	
Measurement Range	Low temperature range: -20°C~+150°C High temperature range: 100°C~650°C Automatic (Optional: -20~1500°C) *Will result in model option change	
Measurement Accuracy	±2°C or ±2% of the reading	
Minimum Imaging Distance	Standard: 0.4m; Wide-angle: 0.2m; Long-focus: 3m; Ultra-long-focus: 4m; Macro: 39mm; Super macro: 19mm	
Display Screen Size (inch) Resolution	5-inch sunlight readable, OLED touch display; 1280×720 resolution, Gorilla explosion-proof glass	
Visible Light Camera	4224×3136 (13 Megapixel digital camera)	
Palettes	19 palettes including iron red, Gray, Inverse iron red, Inverse gray	
Image Modes	Thermal imaging, Visible light, PIP, Thermal fusion	
Temperature Scale	Automatic, Manual, Accurate	
Data Storage	SD card, Standard 64GB, Hot plug, with a maximum extension capacity of 2TB	
Text Note	Yes. Free text input, Preset text, OCR recognition, QR code scanning and voice-to-text input supported	
Voice Note	Yes, with a maximum time length of 300s	
Radiation Infrared Video Recording	Compressed full radiation video recording (.irv) supported	
Non-radiation Infrared or Visible Light Video	Standard Mp4 video recording	
Radiation Infrared Video Stream	TYPE-C/WLAN connection to PC, for real-time transmission of radiation infrared video streams	
Non-radiation Infrared Video Stream	RTSP H.264	

Communication Interface	USB 3.0, Wi-Fi, Bluetooth	
Video Resolution	1280×720 pixels	
Temperature Measurement Correction	Correction of screen emissivity, reflected background temperature, ambient temperature, atmospheric transmittance, and distance parameters	
Positioning	GPS, BDS, GLONASS, supported, with geographical location data overlaid on images	
Analysis Report	PDF format. Template editing and import on the device	
Laser Rangefinding	905nm, Class I, <10mW, laser pointer and laser rangefinding HF rangefinder module, at the frequency of 1000Hz (20-20000Hz adjustable), Range of 0.05m to 50m, accuracy ±1mm+50PPM, anti-background light capability 100K LUX	
Area Measurement	Yes	
Analysis Functions on the Device	Up to 15 movable points, lines, frames, circles, and polygons;. Up to 5 preset modes	Up to 20 movable points, lines, frames, circles, and polygons; Up to 5 preset modes
Temperature Difference Analysis	Supported	
Trend Analysis	Temperature trend recording, display at 15-minute intervals, image capture and storage in the specified file, and image viewing in the device's library in secondary analysis mode	
Image Freezing	Single frame	Single frame + full radiometric video streams
Intelligent Routine Inspection	Supported. General task package import and editing, standard and automatic naming of images	
Routine Inspection	Record Self-inspection Supported	
Dual-Spectrum Video Recording	Simultaneous Infrared video and Visible light video recording, in MP4 format	
Digital Zoom	1× ~ 10×	
Connection Type	Wi-Fi, Bluetooth, Type-C	
Flashlight	Yes	
Microphone/Speaker	Built-in	
Battery Type	10000mAh lithium-ion battery, field-replaceable, fast charging (certified)	
Charge Mode	Direct charging, desktop charging	
Battery Operating Time	Continuous operating time >3 hours (depending on the actual environment and service conditions)	
External Interface	TYPE-C USB 3.0, SD card, SIM card, Mini HDMI, tripod	
Dimensions	14.4 x 12.9 x 30.7cm	
Weight	1.3kg	
Packing List	Device, lens, lithium-ion battery×2, charging socket, charger, charging cable, Bluetooth headset, SD card 64GB), Type-C cable, lens hood, hand strap, and lens cap	
Environmental	IP54	



**Professional
Grade
Products**

**Best In Class
Warranty
Programmes**

**Product &
Service
Training**

Regd. Office:
Asian Contec Ltd.
Asian Centre, B-28, Okhla Industrial Area, Phase-1,
New Delhi -110020, India.

Contact Nos.:
Tel : +91-11-41860000 (100 Lines),
Direct Sales Helpline : +91-11-41406926
Web : www.stanlay.in www.stanlay.com
email: sales@stanlay.com

Works :
Asian Contec Ltd. 13/7,
Mathura road, Faridabad, Haryana, India

Regional Offices :
• Mumbai • Bengaluru • Hyderabad • Vadodara • Kolkata
• Lucknow • Patna • Bhubaneshwar • Guwahati

Sales Channel Locations: • Chennai

Catalogue Version : ST/STX 480-640/2024/01

www.stanlay.in

**Quality
Management
System**

ISO 9001: 2015

1-QSC202101102

